



## **Lego Racers Shortcuts And Secrets**

By: JB- Alaska Works

On Circuit 1, Circuit 2, Circuit 7



### World One Shortcuts And Secrets

#### Barrel Shortcut

Location: Imperial Grand Prix

Use any red brick power-up to fire at this group of barrels. They will break and you can drive through.



#### Cannon Secret

Location: Imperial Grand Prix

Push the "Shift" key when close to this cannon to make it fire. Do not have a power-up when doing this.



#### Canyon Shortcut

Location: Dark Forest Dash

Follow the arrow through a small opening where you will see one small white power-up to get before falling down a drop back onto the track.



#### Block Shortcut

Location: Magma Moon Marathon

Get a shield (blue) power-up and activate it before driving through the fuzzy blue rock formation indicated by the arrow.



Blue Globe Shortcut

Location: Magma Moon Marathon

Drive past this place and look at the object the arrow is pointing to. It is lit up by 3 red lights. So, next lap drive through each red “arch” to open the big globe.



Door Shortcut

Location: Desert Adventure Dragway

Hit the door indicated by the arrow to cause it to drop down revealing a shortcut. Follow it to gain some power-ups.



Sphinx Shortcut

Location: Desert Adventure Dragway

Hit the object in the box with any red power-up to make it disappear, revealing a shortcut connected to the other shortcut on this level.



World Two Shortcuts And Secrets

Monument Shortcut

Location: Tribal Island Trail

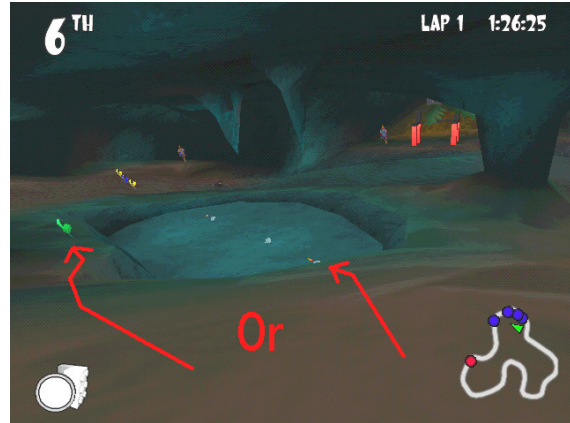
Follow the arrow around that statue to drop down to the crocodile area, saving some time.



### Cave Shortcut

Location: Tribal Island Trail

Follow the arrow into a tunnel for a useful shortcut. Note: It's very dark and even I have trouble finding it.



### Monument Shortcut

Location: Tribal Island Trail

Follow either arrow inside the cave to get a rocket (green) power-up or 3 white power-ups.



### Canyon Shortcut

Location: Royal Knights Raceway

Follow the arrow through a small tunnel. Note: This shortcut is difficult to drive through easily and find.



### Ice Hill Shortcut

Location: Ice Planet Pathway

Drive up the icy hill to find 3 white power-ups, 1 red, and 1 green power-up. This is my favorite track!



### Icy Embankment Shortcut

Location: Ice Planet Pathway

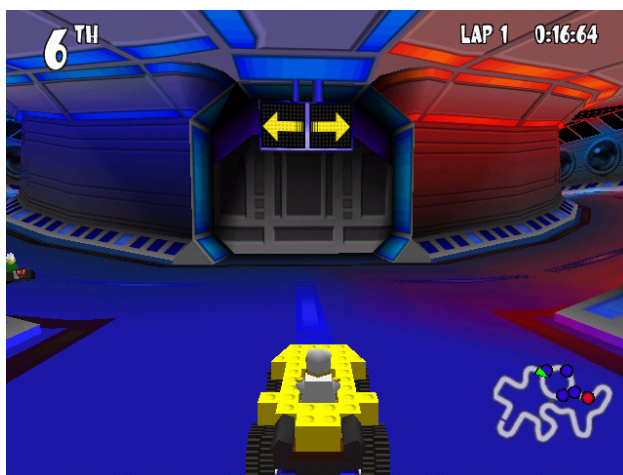
Drive over the snowbank to take a very small shortcut. Note: It's really a drop. Use powerslide to swerve on down there.



### Waterfall Shortcut

Location: Amazon Adventure Rally

Drive through the waterfall for a really great shortcut! Be prepared for a quick turn or two though.



### Warp! Shortcut

Location: Rocket Racer Run

Hit this gray door with any red power-up to open it up. Drive into it to warp ahead!